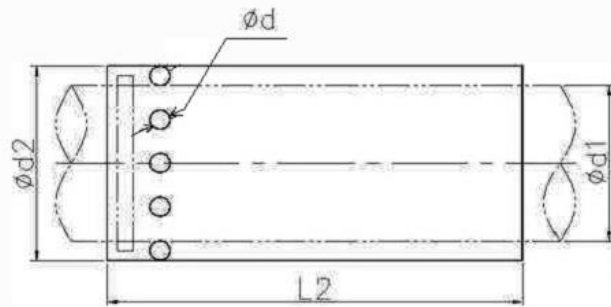




Shenzhen Bede Mold CO.,Ltd

Factory Address:98 Industrial Area,Zhongxin Rd.,Xinqiao Street,Bao'an District, Shenzhen, China
 Office Phone:+8675527084976 Mobile:+8615989309421 Email:kerrykim@szbede.com contact: kerry kim

Ball retainer bush is made of cooper or aluminium or POM bass material. The surface was processed with high quality steel balls which is arranged or derly in certain angle and dencity. It is widely used in cold punching mold and machine tools with high precision.



size / $\phi d1$	length / $\phi d2$	ball diameter/ ϕd	size / $\phi d1$	Length / $\phi d2$	ball diameter/ ϕd
16	30	2,3	18 / 19	40	3
	40	2,3		50	3
	50	2,3		60	3
20 / 22	40	3	25 / 28	40	3 / 3 and 4 for 28
	50	3		50	3 / 3 and 4 for 28
	60	3		60	3 / 3 and 4 for 28
	70	3		70	3 / 3 and 4 for 28
38	50	5		80	3 / 3 and 4 for 28
	60	5	31 / 32	50	4
	70	5		60	4
	80	5		70	4
	90	5		80	4
	100	5			